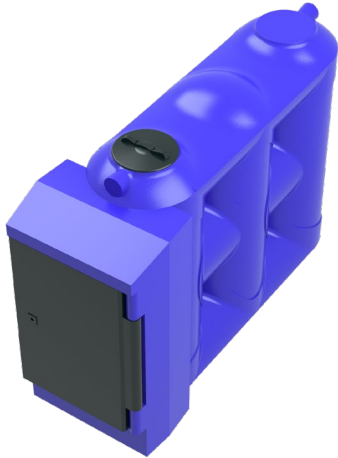




POWERED BY MAMMOTH

SLIMLINE UNBUNDED TANK



STANDARD SIZES

ECOSLD3000P

Slimline Unbanded Tank: 3,000L
2,870(L) x 940(W) x 2,150(H)

ECOSLD5000P

Slimline Unbanded Tank: 5,000L
3,590(L) x 1,170(W) x 2,110(H)

*Average dimensions listed as regulations vary per location

STANDARD FEATURES

- 2" Stainless Steel dry-break & pipework
- 2" Outlet and Ball Valve
- Breather Vents
- Earthing Rod
- External liquid level indicator
- Inspection hatch
- Mechanical overfill protection

DISPENSER / EXTRA OPTIONS

Everlink AFM

- Vandal-Proof Keypads
- LCD Display
- Flush / Surface Mount or Retrofit Unit
- Maximum 6 Tank Support
- Multi Pump Control
- Multi Fluid Control
- Built In RFID Reader
- Real time Intuitive Management Software
- Up to 8000 users per enterprise (upgradeable to 20,000)
- Up to 1000 security profiles per enterprise
- Battery backed
- 3G, 4G, 5G and CATM communication options

PAD REQUIREMENTS

- 150mm thick level surface
- Pad width to extend a metre around the footprint of the tank
- Footprint requires to be free of any debris, rocks, or vegetation
- Concrete pad or blue metal aggregate to extend 500mm beyond the tank footprint



1300 272 444
orders@ecoblue.com