



POWERED BY MAMMOTH

UNBUNDED ROUND TANK



STANDARD SIZES

ECOUBD5000P

Unbounded Round Poly Tank: 5,000L
2,200(L) X 1,800(W) X 2,400(H)

ECOUBD8500P

Unbounded Round Poly Tank: 8,000L
3,000(L) x 2,500(W) x 2,960(H)

ECOUBD10500P

Unbounded Round Poly Tank: 10,000L
3,000(L) x 2,500(W) x 2,960(H)

*Average dimensions listed as regulations vary per location

PAD REQUIREMENTS

- 150mm thick level surface
- Pad width to extend a metre around the footprint of the tank
- Footprint requires to be free of any debris, rocks, or vegetation
- Concrete pad or blue metal aggregate to extend 500mm beyond the tank footprint



Concrete



Blue Metal

STANDARD FEATURES

- Lockable Cabinet
- 240V Transfer Pump (30 LPM) + Electrical Box
- Stainless steel fill point Dry Break Fitting
- OCIO level indication Gauge
- Hi-Level alarm
- 6m hose, auto nozzle, nozzle holster,
- Digital flow meter
- ECODIP Telemetry

OPTIONAL EXTRAS

- Submersible Pump (for External Bowser)
- High Flow Dispensing (150 LPM)
- Solar Power Supply
- External Nozzle Boot
- Standard Height Hose Mast (2m)
- High Hose Mast (6m)
- Hose reel
- MC Box and user key or pin code fob system
- Fuel management integration



1300 272 444
orders@ecoblue.com



POWERED BY MAMMOTH

BUNDED ROUND TANK



STANDARD SIZES

ECOBND5000P

Bunded Round Poly Tank: 5,000L
2,750(L) X 2,200(W) X 2,260(H)

ECOBND7000P

Bunded Round Poly Tank: 7,000L
3,070(L) x 2,500(W) x 2,350(H)

ECOBND10000P

Bunded Round Poly Tank: 10,000L
3,062(L) x 2,500(W) x 2,710(H)

*Average dimensions listed as regulations vary per location

PAD REQUIREMENTS

- 150mm thick level surface
- Pad width to extend a metre around the footprint of the tank
- Footprint requires to be free of any debris, rocks, or vegetation
- Concrete pad or blue metal aggregate to extend 500mm beyond the tank footprint



Concrete



Blue Metal

STANDARD FEATURES

- Lockable Cabinet
- 240V Transfer Pump (30 LPM) + Electrical Box
- 50mm stainless steel fill point Dry Break Fitting
- Overfill Protection Valve
- OCIO level indication Gauge
- Hi-Level alarm
- 5m hose, auto nozzle, nozzle holster
- Digital flow meter
- ECODIP Telemetry

OPTIONAL EXTRAS

- Submersible Pump (for External Bowser)
- High Flow Dispensing (150 LPM)
- Solar Power Supply
- External Nozzle Boot
- Standard Height Hose Mast (2m)
- High Hose Mast (6m)
- Hose reel
- MC Box and user key or pin code fob system
- Fuel management integration



1300 272 444
orders@ecoblue.com



POWERED BY MAMMOTH

SLIMLINE BUNDED TANK



STANDARD SIZES

BLUEQUIP SB 5,000L Slimline Tank

Standard: 4,010(L) x 1,125(W) x 2,520(H)
2,360Kg

BLUEQUIP SB 10,000L Slimline Tank

Standard: 4,010(L) x 2,250(W) x 2,520(H)
3,540Kg

BLUEQUIP SB 23,000L Slimline Tank

Standard: 6,510(L) x 2,250(W) x 2,520(H)
7,160Kg

*Average dimensions listed as regulations vary per location

PAD REQUIREMENTS

- 150mm thick level surface
- Pad width to extend a metre around the footprint of the tank
- Footprint requires to be free of any debris, rocks, or vegetation
- Concrete pad or blue metal aggregate to extend 500mm beyond the tank footprint



Concrete



Blue Metal



STANDARD FEATURES

- Self bundled design with lockable pump room on the front fascia
- Fully insulated tank
- Stainless Steel internal tank
- Multi Stage sub pump as standard
- Switchboard ready to use
- Overfill protection valve & alarm
- Tank gauge with alarm outputs
- Easy access to internal tank for maintenance
- Forkliftable
- Tie down lugs in all corners

DISPENSER OPTIONS

BLUEQUIP Standard Built-In Side

Dispenser Panel Includes: Digital Display, Nozzle Holster & Emergency Stop Button, Hose, Hose Mast & Nozzle

BLUEQUIP NMI Approved Built-In

Dispenser Panel Includes: Retail Display, Nozzle Holster, Hose, Hose Mast & Nozzle

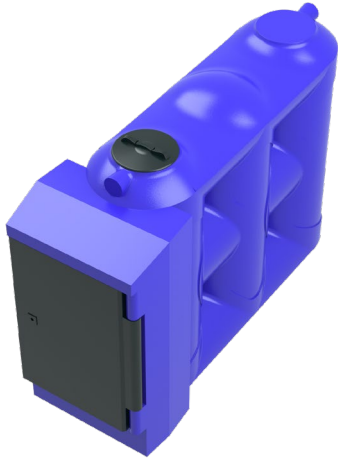


1300 272 444
orders@ecoblue.com



POWERED BY MAMMOTH

SLIMLINE UNBUNDED TANK



STANDARD SIZES

ECOSLD3000P

Slimline Unbanded Tank: 3,000L
2,870(L) x 940(W) x 2,150(H)

ECOSLD5000P

Slimline Unbanded Tank: 5,000L
3,590(L) x 1,170(W) x 2,110(H)

*Average dimensions listed as regulations vary per location

STANDARD FEATURES

- 2" Stainless Steel dry-break & pipework
- 2" Outlet and Ball Valve
- Breather Vents
- Earthing Rod
- External liquid level indicator
- Inspection hatch
- Mechanical overfill protection

DISPENSER / EXTRA OPTIONS

Everlink AFM

- Vandal-Proof Keypads
- LCD Display
- Flush / Surface Mount or Retrofit Unit
- Maximum 6 Tank Support
- Multi Pump Control
- Multi Fluid Control
- Built In RFID Reader
- Real time Intuitive Management Software
- Up to 8000 users per enterprise (upgradeable to 20,000)
- Up to 1000 security profiles per enterprise
- Battery backed
- 3G, 4G, 5G and CATM communication options

PAD REQUIREMENTS

- 150mm thick level surface
- Pad width to extend a metre around the footprint of the tank
- Footprint requires to be free of any debris, rocks, or vegetation
- Concrete pad or blue metal aggregate to extend 500mm beyond the tank footprint



1300 272 444
orders@ecoblue.com